

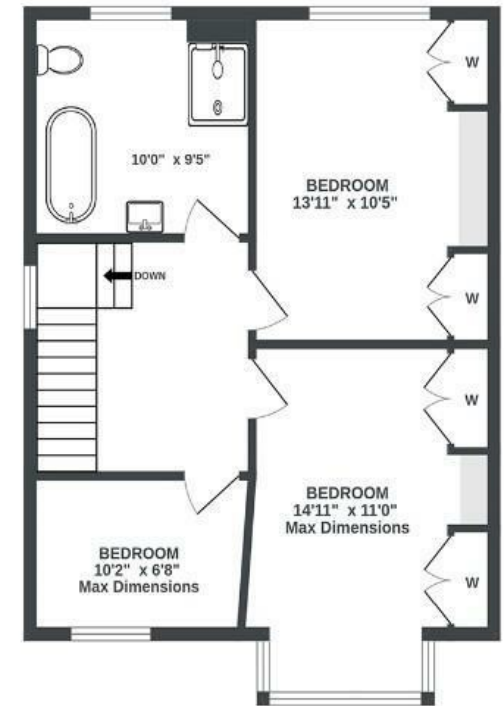
# Highridge Road

## BISHOPSWORTH

APPROXIMATE FLOOR AREA  
162.4 SQM / 1748 SQFT



1ST FLOOR  
570 sq.ft. approx.



Illustrations are for reference purposes only, measurements are approximate, not to scale.

Boardwalk

# Highridge Road

BISHOPSWORTH, BRISTOL



£400,000



BS13 8HS



3 Bedrooms



1 Bathrooms

*"This home has been a wonderful haven for our family, offering a peaceful retreat from the energy of the City Centre. Living here you have the countryside on your doorstep and the garden brings nature right to your back door. The spacious open-plan kitchen/diner area is ideal for entertaining and everyday family life, creating a warm and welcoming atmosphere. You'll find North Street just moments away, and the City Centre is easily accessible—making commuting simple. The neighbourhood is friendly and community-focused, with excellent primary schools nearby. With Parson Street Station, local bus routes within walking distance, and Bristol Airport close by, travel and connectivity are exceptionally convenient."*

